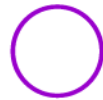


# COMPLETE-A-SKETCH™



PROJECT CORNER™

*Archive*  
**'07**

Copyrighted material. Sample only.  
Purchased version does not have watermark.



**INSIGHT™**  
**TECHNICAL EDUCATION**

[www.insightteched.com](http://www.insightteched.com)

COMPLETE-A-SKETCH™

PROJECT CORNER™

*Archive '07*

Copyright © 2008 by Mel Peterman & Clay Peterman

All rights reserved. No part of this work may be reproduced in any form or by any electronic means, including information storage and retrieval systems, without the written permission from the publisher. The pages may be freely printed and used as intended by the publisher.

This is shareware.

We ask that if you use this collection, you send \$5.00 to Insight Technical Education for Archive '07. Send payment to the address listed on our website:

[www.insighttched.com](http://www.insighttched.com)

Disclaimer:

This Software is sold on an "AS IS" basis.

We believe this collection to operate as intended, although we make no warranties, either expressed or implied. Nor will we be held responsible for loss of data to any system either directly or indirectly related to the use of this collection.

Designed by Mel Peterman

Illustrations by Clay Peterman

Published by Insight Technical Education

[www.insighttched.com](http://www.insighttched.com)

877-640-2256

**NOTE: This Software may NOT be copied to any internet site or shareware libraries without the expressed written consent of the author.**

Requirements:

Adobe Acrobat 7 reader or higher. Download available at [www.adobe.com](http://www.adobe.com).

Support:

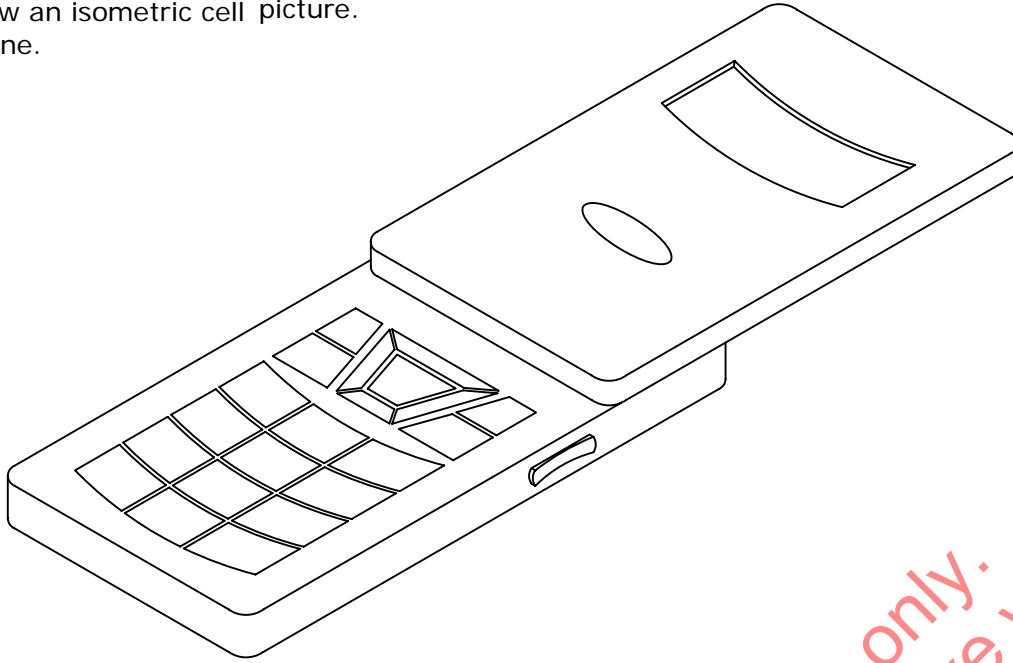
The only technical support that is available for Acrobat is from Adobe and is subject to the policies of Adobe. If the file does not work for you, please contact us at [www.insighttched.com](http://www.insighttched.com). If the file will not open or does not work for you, we will replace it or give you your money back. Original proof of purchase from Insight Technical Education is required, no exceptions.



Insight™, Insight™ Technical Education, Complete-A-Sketch™, insighttched.com™, insighttechnicaleducation.com™, sixbranches.com™, and Project Corner™ Project Corner Logo, and Insight Technical Education Train Logo are trademarks of Melvin G. Peterman.

Date: January, 2007  
Project: Cell Phone  
Complete-A-Sketch  
Project description:  
Draw an isometric cell  
phone.

Instructions:  
1. Draw over the  
intersections with a  
pencil to complete the  
picture.



Copyrighted material. Sample only.  
Purchased version does not have watermark.



**INSIGHT™**  
**TECHNICAL EDUCATION**

877-640-2256

For more information, visit our website  
[www.insightteched.com](http://www.insightteched.com)

©Melvin G. Peterman 2006. ALL RIGHTS RESERVED. This project  
may not be copied or transmitted without written permission.  
Permission is granted to purchaser to print for personal use only.

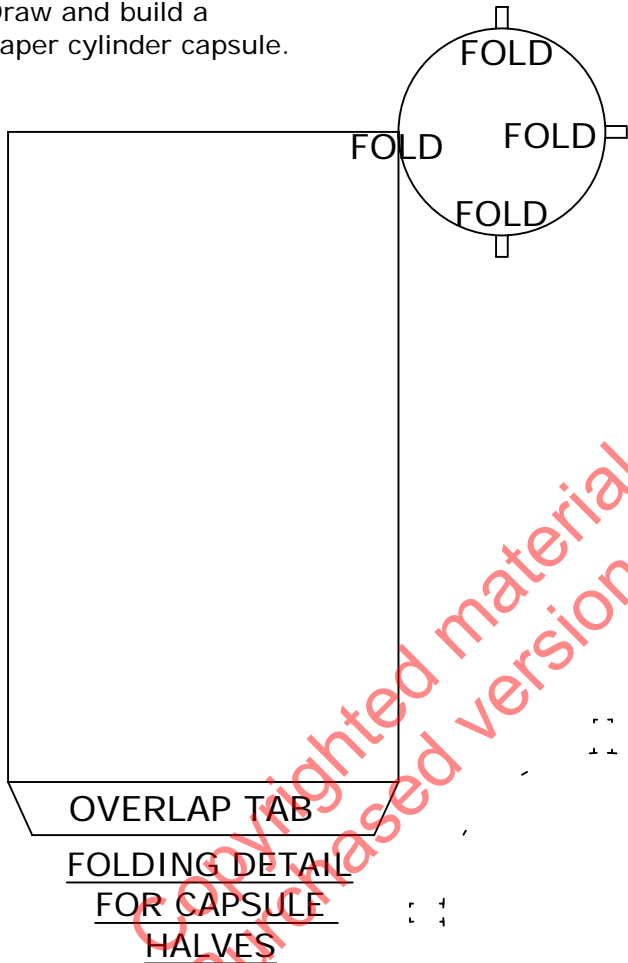
Drawn by: Clay Peterman



Date: February, 2007  
 Project: Cylinder Capsule  
 Project description:  
 Draw and build a  
 paper cylinder capsule.

Instructions:

1. Draw over the intersections with a pencil.
2. Cut out the flat pattern.
3. Fold on all of the lines marked "FOLD" on the "FOLDING DETAIL".
5. Use small pieces of clear tape to fasten the flat pattern together.
6. The two cylinders fit together to make a capsule.



FLAT PATTERN FOR EXTERNAL CAPSULE HALF



**INSIGHT™**  
**TECHNICAL EDUCATION**

877-640-2256

For more information, visit our website  
[www.insightteched.com](http://www.insightteched.com)

Folding detail same as  
page #1.

Copyrighted material. Sample only.  
Purchased version does not have watermark.

FLAT PATTERN FOR INTERNAL  
CAPSULE HALF



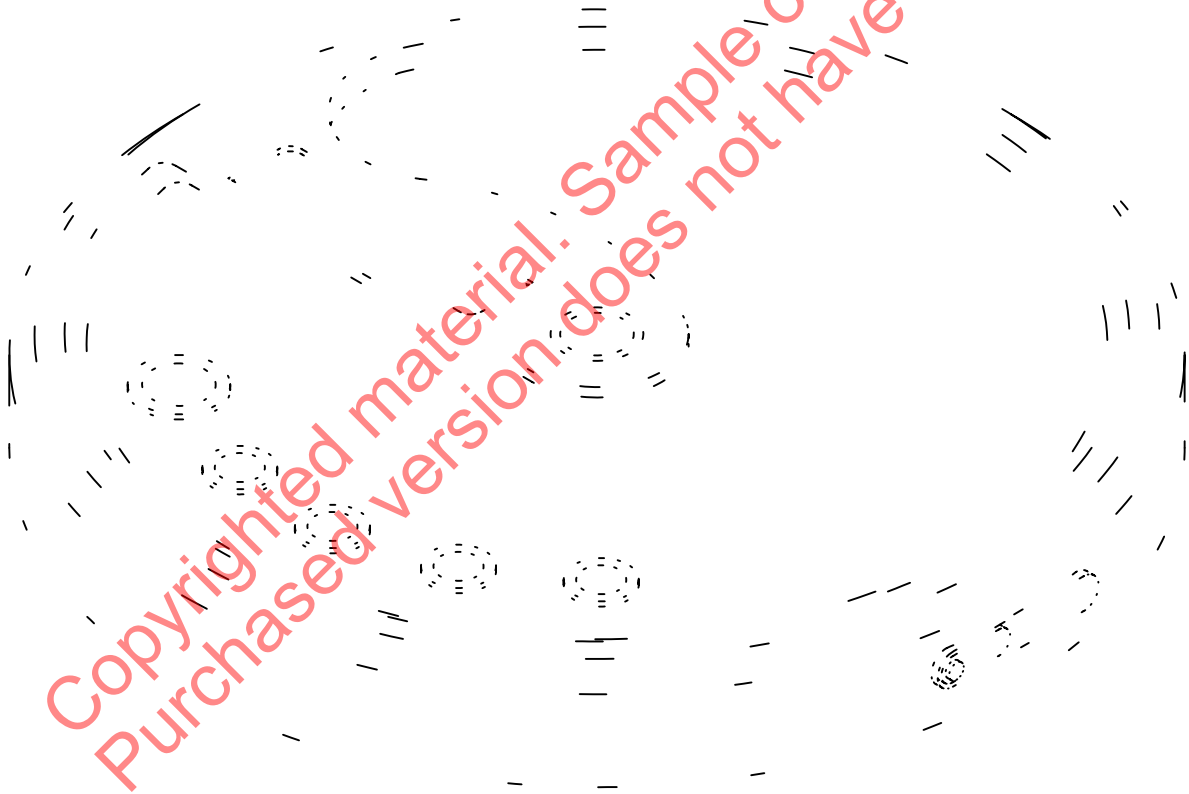
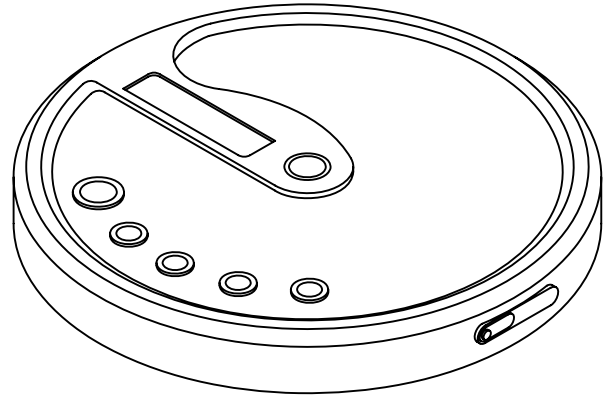
**INSIGHT™**  
**TECHNICAL EDUCATION**

877-640-2256

For more information, visit our website  
[www.insightteched.com](http://www.insightteched.com)

Date: March, 2007  
Project: CD Player  
Complete-A-Sketch  
Project description:  
Draw an isometric CD  
Player.

Instructions:  
1. Draw over the  
intersections with a  
pencil to complete the  
picture.



**INSIGHT™**  
**TECHNICAL EDUCATION**

877-640-2256

For more information, visit our website  
[www.insightteched.com](http://www.insightteched.com)

©Melvin G. Peterman 2007. ALL RIGHTS RESERVED. This project  
may not be copied or transmitted without written permission.  
Permission is granted to purchaser to print for personal use only.

Drawn by: Clay Peterman



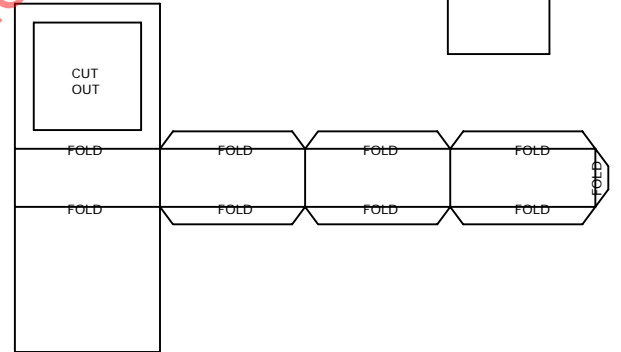
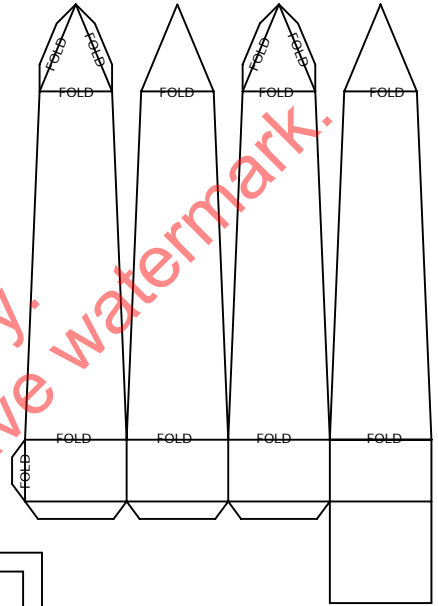
Date: April, 2007  
 Project: Obelisk model  
 Project description:  
 Draw and build a paper obelisk.

Instructions:

1. Draw over the intersections with a pencil.
2. Cut out the flat pattern.
3. Cut out area marked "CUT OUT". Fold on all of the lines marked "FOLD" on the "FOLDING DETAIL".
4. Use small pieces of clear tape to fasten the flat pattern together.
5. Insert obelisk into the base.



FLAT PATTERN FOR OBELISK AND BASE



FOLDING DETAIL FOR OBELISK AND BASE



**INSIGHT™**  
**TECHNICAL EDUCATION**

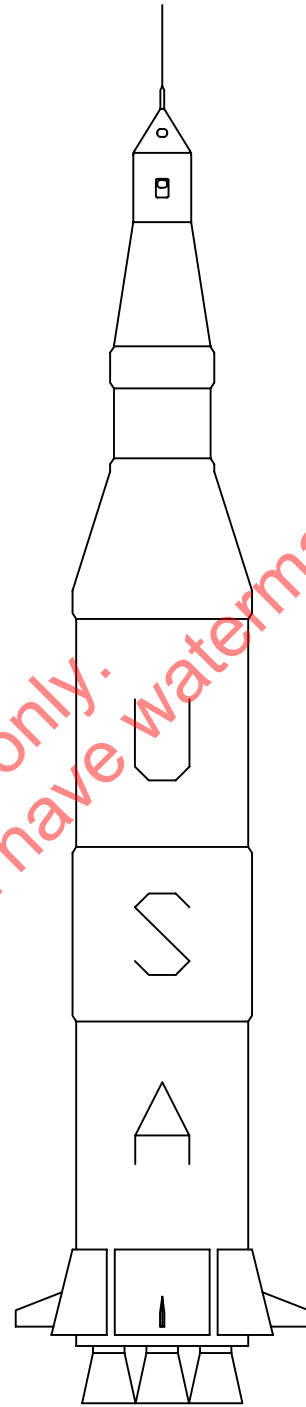
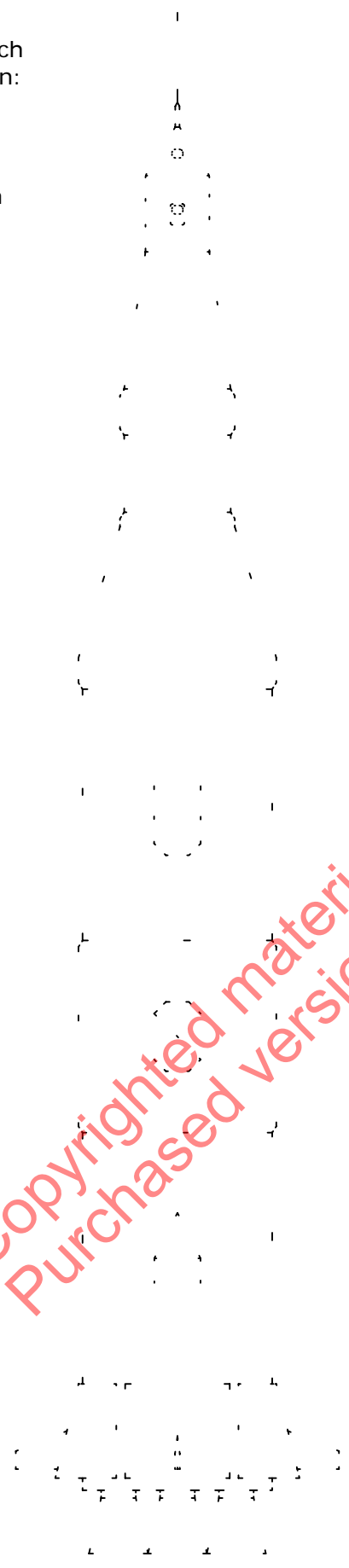
877-640-2256

For more information, visit our website  
[www.insightteched.com](http://www.insightteched.com)

Drawn by: Clay Peterman

Date: May, 2007  
Project: Rocket  
Complete-A-Sketch  
Project description:  
Rocket.

Instructions:  
1. Draw over the  
intersections with  
a pencil.



Copyrighted material. Sample only.  
Purchased version does not have watermark.



**INSIGHT™**  
**TECHNICAL EDUCATION**

877-640-2256

For more information, visit our website  
[www.insightteched.com](http://www.insightteched.com)

©Melvin G. Peterman 2007. ALL RIGHTS RESERVED. This project  
may not be copied or transmitted without written permission.  
Permission is granted to purchaser to print for personal use only.

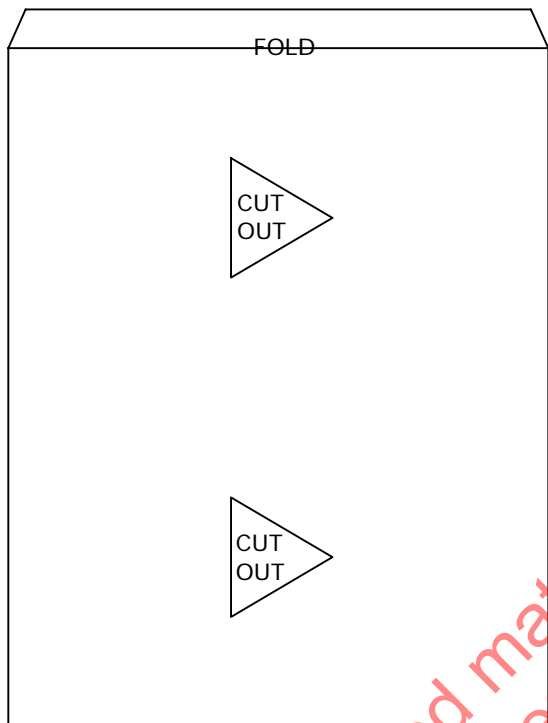
Drawn by: Clay Peterman



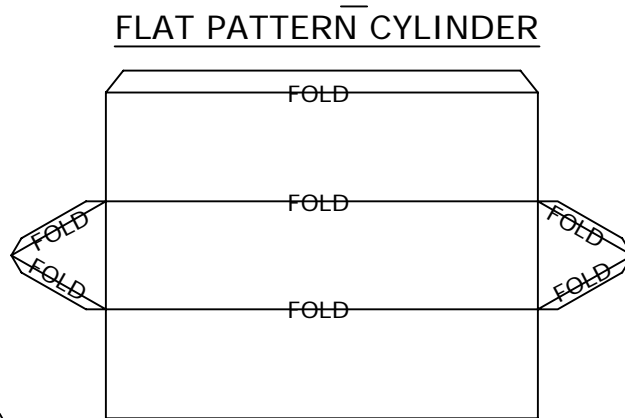


Date: June, 2007  
 Project: Cylinder with  
 Intersecting Triangular  
 Prism Model  
 Project description:  
 Draw and and build a  
 paper cylinder with an  
 intersecting triangular  
 prism.

- Instructions:
1. Draw over the intersections with a pencil.
  2. Cut out where it says cut out on the folding detail.
  3. Fold where it says fold on folding detail.
  4. Use clear tape to fasten the model together.
  5. Insert the prism through the cylinder.



FOLDING DETAIL



FLAT PATTERN CYLINDER

FOLDING DETAIL

FLAT PATTERN TRIANGULAR PRISM

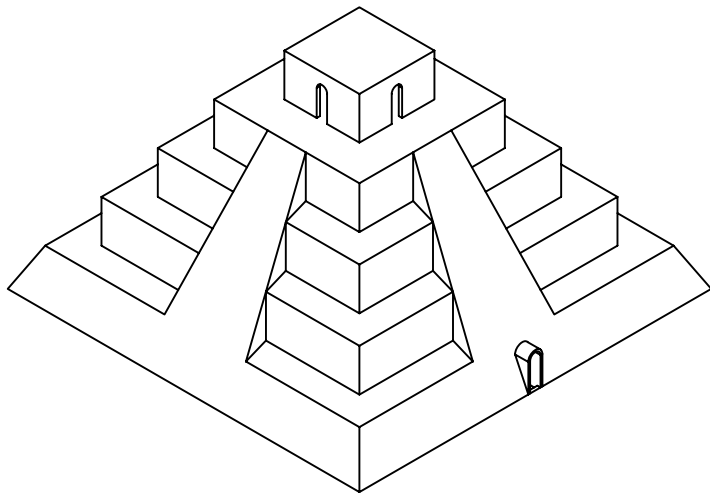


**INSIGHT™**  
**TECHNICAL EDUCATION**

877-640-2256

For more information, visit our website  
[www.insightteched.com](http://www.insightteched.com)

Drawn by: Clay Peterman



Date: July, 2007

Project: Pyramid

Complete-A-Sketch

Project description:

Draw a Pyramid.

Instructions:

1. Draw over the intersections with a pencil to complete the drawing.



**INSIGHT™**  
**TECHNICAL EDUCATION**

877-640-2256

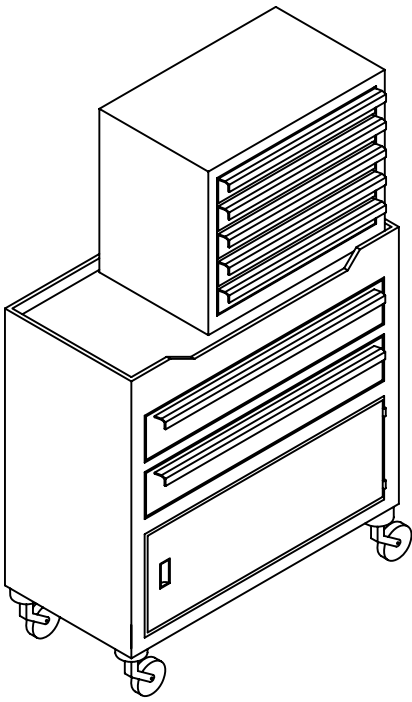
For more information, visit our website  
[www.insightteched.com](http://www.insightteched.com)

©Melvin G. Peterman 2007. ALL RIGHTS RESERVED. This project may not be copied or transmitted without written permission. Permission is granted to purchaser to print for personal use only.

Drawn by: Clay Peterman

Date: August, 2007  
Project: Tool Box  
Complete-A-Sketch  
Project description:  
Draw a two toolboxes.

Instructions:  
1. Draw over the intersections with  
a pencil to complete the drawing.



Copyrighted material. Sample only. Purchased version does not have watermark.



**INSIGHT™**  
**TECHNICAL EDUCATION**

877-640-2256

For more information, visit our website  
[www.insightteched.com](http://www.insightteched.com)

Drawn by: Clay Peterman

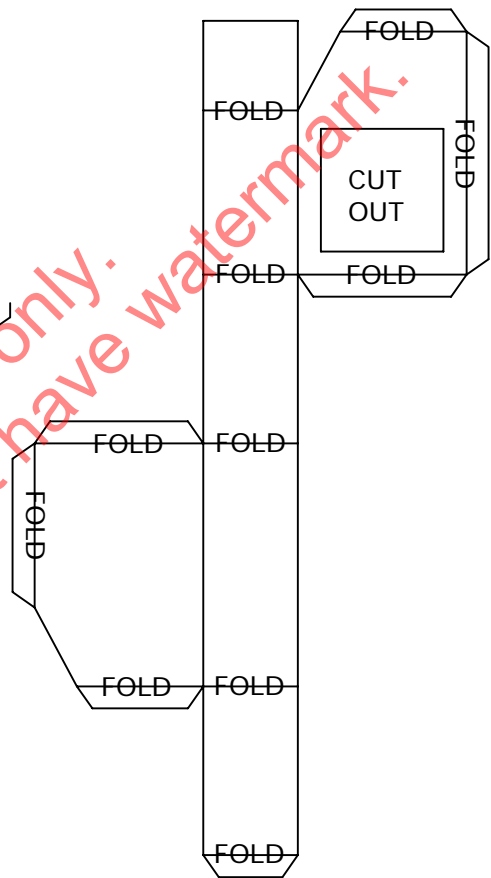


Date: September, 2007  
 Project: Skyscraper model  
 Project description:  
 Draw and build a paper skyscraper.

- Instructions:
1. Draw over the intersections with a pencil to complete the drawing.
  2. Cut out the flat pattern. Cut out areas that say "Cut Out".
  3. Fold the flat pattern and fasten together with clear tape.
  4. Insert the pieces together.
  5. Optional: Use a toothpick as an antenna. Insert it at the "+" mark on the top of the building. Use a red marker to color the end of the toothpick if desired.



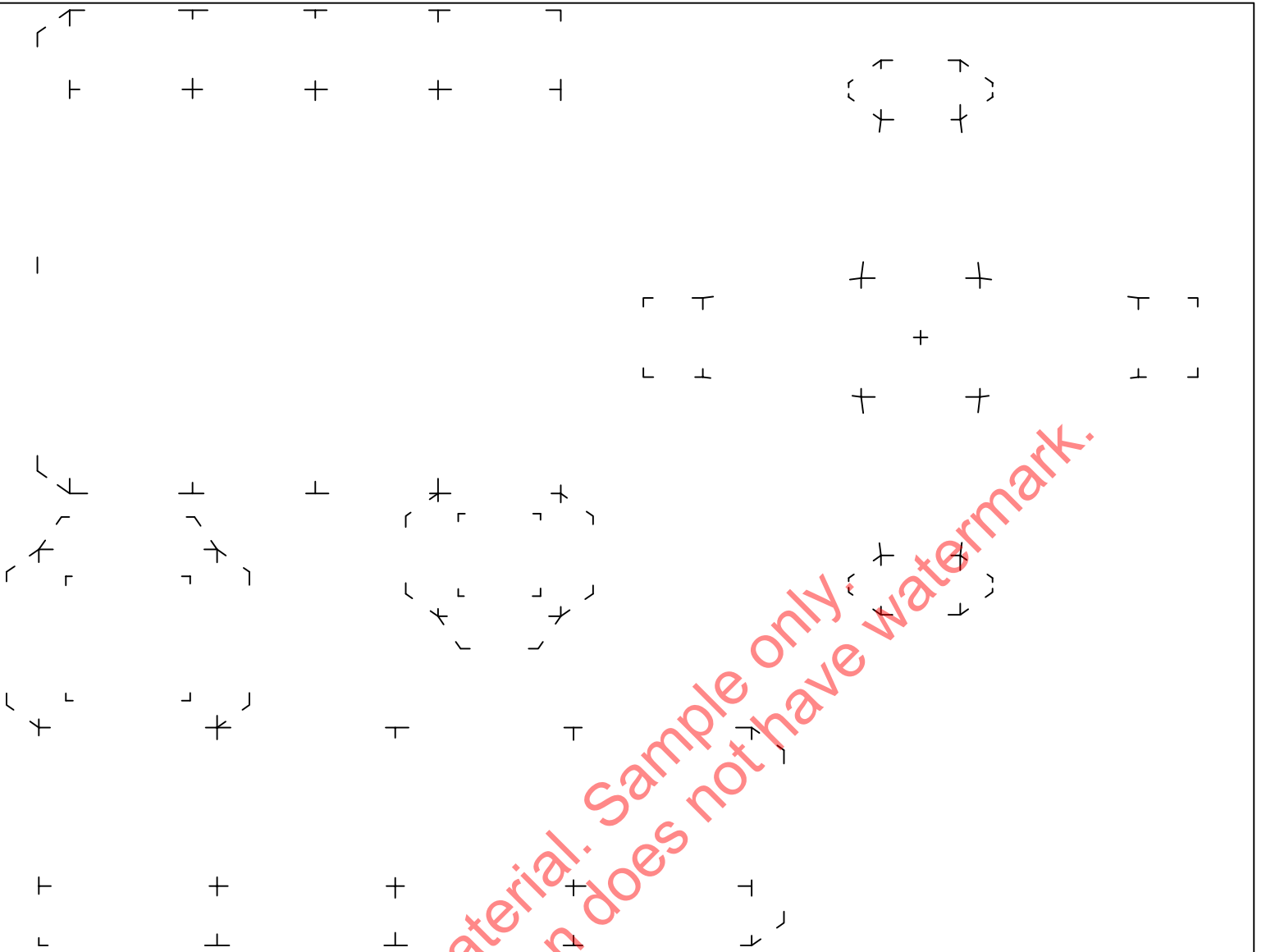
FLAT PATTERN FOR BASE



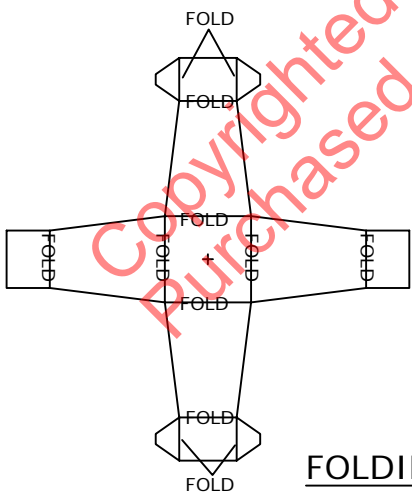
FOLDING DETAIL FOR BASE



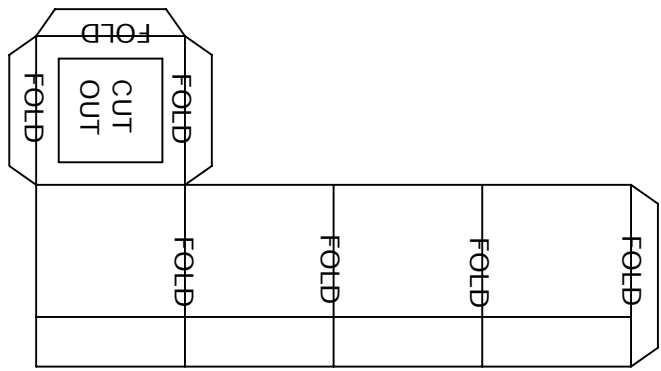
**INSIGHT™**  
**TECHNICAL EDUCATION**  
 877-640-2256



FLAT PATTERNS



FOLDING DETAILS



**INSIGHT™**  
**TECHNICAL EDUCATION**

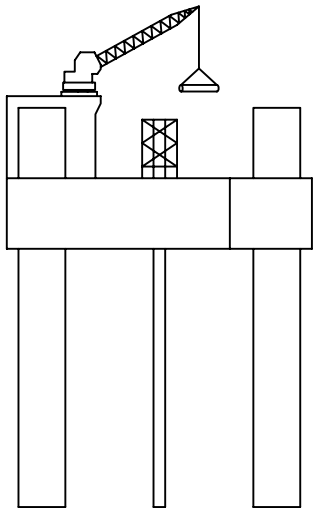
877-640-2256

For more information, visit our website  
[www.insightteched.com](http://www.insightteched.com)

©Melvin G. Peterman 2007. ALL RIGHTS RESERVED. This project may not be copied or transmitted without written permission. Permission is granted to purchaser to print for personal use only.

Drawn by: Clay Peterman

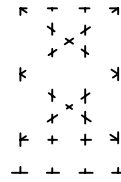
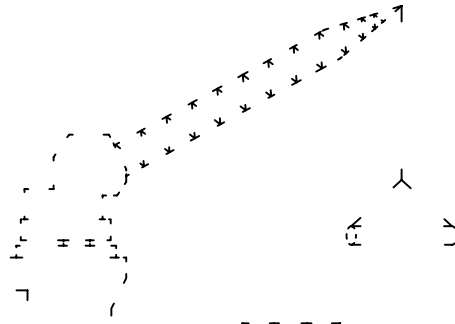




Date: November, 2007  
Project: Oil Rig  
Complete-A-Sketch  
Project description:  
Draw an oil rig.

Instructions:

1. Draw over the intersections with a pencil to complete the drawing.



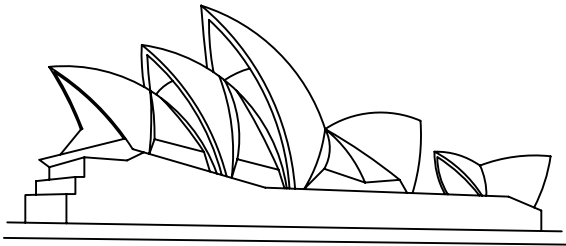
Copyrighted material. Sample only.  
Purchased version does not have watermark.



**INSIGHT™**  
**TECHNICAL EDUCATION**

877-640-2256

For more information, visit our website  
[www.insightteched.com](http://www.insightteched.com)



Date: December, 2007  
Project: Sydney Opera House  
Complete-A-Sketch  
Project description:  
Draw the Sydney opera house.

Instructions:  
1. Draw over the intersections with a pencil to complete the drawing.



Copyrighted material. Sample only.  
Purchased version does not have watermark.



**INSIGHT™**  
**TECHNICAL EDUCATION**

877-640-2256

For more information, visit our website  
[www.insightteched.com](http://www.insightteched.com)



# Thank you for purchasing this book!

*We hope that you have enjoyed this book and that it has helped you in meeting your goals and that what you have learned will benefit you in your life pursuits.*

*Our complete line of books:*

COMPLETE-A-SKETCH™ VOLUME 1 - ORTHOGRAPHIC  
COMPLETE-A-SKETCH™ VOLUME 2 - ISOMETRIC  
COMPLETE-A-SKETCH™ VOLUME 3 - PERSPECTIVE  
COMPLETE-A-SKETCH™ VISION - DEXTERITY - FOCUS™  
PRACTICAL DRAFTING™  
PRACTICAL GRAPHIC DESIGN™  
PRACTICAL ACCOUNTING FUNDAMENTALS™

*We are always working on new books, so please feel free to visit our website to see what new topics we may have added.*

*All the best,*

*Mel Peterman, Publisher*

*Insight Technical Education*

*[www.insighttched.com](http://www.insighttched.com)*

*877.640.2256*

Copyrighted material. Sample only. Purchased version does not have watermark.